



INDUSTRIAL RECLAIMING ENGINEERS

(The coatings company)

HARD CHROME PLATING



➤ Industrial Services

- Hard Chrome Electroplating
- Nickel Electroplating
- Electro less Nickel Coating
- Phenolic and Polymer Coatings
- Machining & grindings
- CNC Precision Machining
- NC Surface Grinding
- Plasma Thermal Spray
- Arc Spray Coatings
- Hydraulic Rams Repair
- Hydraulic Testing's
- Valves & Pumps overhauling
- Textile Rolls Manufacturing
- Textile Machines & Parts
- Structural Fabrications

IRE applies a variety of proprietary treatment option to extend the wear life and prevent corrosion attack on treated parts for many industries. We service the industrial areas of Automotive, Textile, sugar mills, steel mills, Plastic Industries, Cement plants, power plants, Aluminum, Hydraulic, Canning, Paper Molding, Flooring Tile, Textile Roll Manufacture, Oil industries, Refineries & too numerous to list.

IRE unlike most competitors puts forth the necessary efforts to satisfy each customer's need. Let us show you our difference.

We look forward to having the opportunity to discuss with you in person your specific needs.

Give us an opportunity, we will render results.

"Our Engineering – Your Solution"

WHAT IS HARD CHROME PLATING?

Hard Chrome Plating has longer been used to increase wear, reduce the coefficient of friction, provide corrosion resistance provide superior release in mold applications and reduce galling and abrasion. In short Hard Chrome will improve the efficiency and increase the life of the plated part. On shaft, Pins and other high wear components the benefit of Chrome increase proportion to the thickness of the deposit (**Up to approximately .5mm thick per surface**). Whether it is buildup smoke or flash chrome our years of servicing the tool and die and mold making industry has given us the expertise necessary to supply the highest quality chrome plating available. At Industrial Reclaiming Engineers we utilize conforming anodize and state of the art rectification to insure uniform deposit thickness. Our in-house chemistry department constantly monitors our capable of providing the best deposit possible.

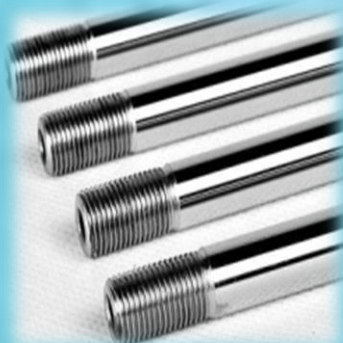
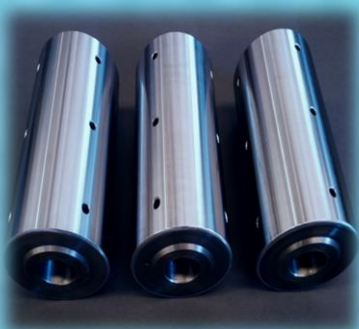
Hard chrome plating is our main process which has brought us customers from many industries including, Textile, sugar Mills, Steel Mills, Cement Plants, Power Plants, Aerospace, Agriculture, Fastener Metal Manufacturing and oil service.

Industrial Reclaiming Engineers has been meeting customers' needs for over 44 years.



PROPERTIES OF HARD CHROME

Deposit Thickness: .0002" – .040" **Lubricity** produces a hard (approximately 68 RC) Lubricious surface. Coefficient of friction 15 **Adhesion:** Applied electrolytic ally resulting in a superior bond to plantings or coating applied without the use of electricity (i.e. electro less nickel, etc.) **Heat Resistance:** 400° to 1300° Fahrenheit. Above 1300° Fahrenheit it will react with carbon monoxide, Sulphur vapor and phosphorus. **Appearance:** Satin / Matt to SPI A1 finish Chrome reflect the appearance of the base metal. It can be polished to achieve the desired finish.



"Our Engineering – Your Solution"

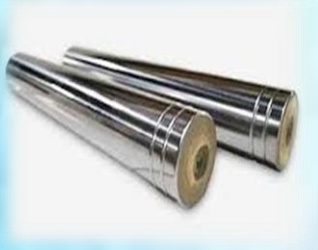
PROVEN APPLICATIONS

Flash (.0001" - .0005") and Smoke (.00005" or less) Cavity Blocks, Core Pins, Cores and cavities, all injection mold components, Extrusion Molds, Crimpers, Slides, and Laminates. Build-Up For increased wear, Repair and salvage Shafts, Pins, Moveable Core and slide and almost any high wear components. We are also able to apply Chrome to carbide.



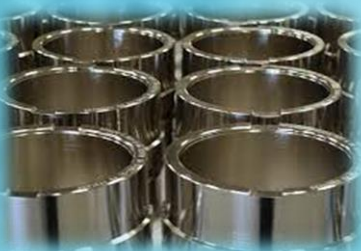
ROLL PLATING

Industrial Reclaiming Engineers offers high quality roll plating and treatment options. We handle both small roll to unlimited size and weight rolls for any industry, steel, Aluminum Stainless or copper base metal are candidates for our proprietary treatment services. We offer auxiliary services such as grinding. Blast Texturing, Super Finishing. Our rotational treatment method renders the best available uniformity of deposit. Our huge capacity guarantee immediate service provided. See list of available our treatment options and call us to discuss which treatments best suits your specific need.



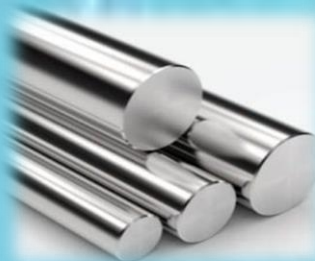
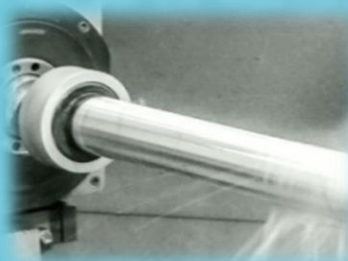
BENEFITS OF HARD CHROME PLATING

Hard Chrome plating the hardness and the corrosion and wear resistance needed for many components subjected to dynamic and environment forces. Hard Chrome plated parts will outperform unplated parts 2 to 10 times in usage. This provides significant savings in replacement cost time and labor. Pars subject to friction, corrosion, and galling, seizing or high temperatures will benefit from hard chrome plating.



HANDLING

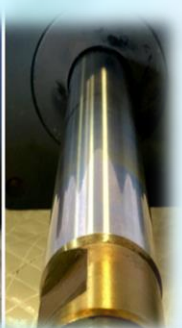
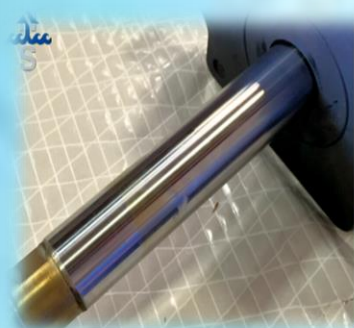
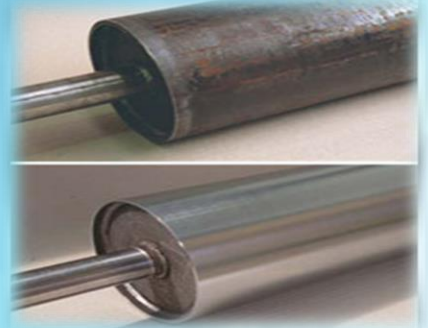
Our entire staff is well aware of the value of the components we handle every day. Our plating Technicians handles every part with the utmost care. Our shipping staff packages every order to insure against damage.



"Our Engineering - Your Solution"

HYDRAULIC ROD & TUBE TREATMENTS

Industrial Reclaiming Engineers both treats new manufactured hydraulic rods and tubes and reconditions used hydraulic components. See our list of available treatment options. We handle both high volume smaller hydraulic components and parts up to 38' long. We provide auxiliary services such as weld repair, honing, Grinding and polishing. I.R.E treatment option render greatly extended wear protection and corrosion resistance. Our seal Plus process applied on finished rod surface virtually prevents corrosion attack to hydraulic surface. Please call us to discuss your specific application.



CONTACT US

Address:

Shed # A-44/45. Plot # B-16
Eastern Film Studio Compound,
Estate Avenue S.I.T.E., Karachi-Pakistan

Phone No:

(021)-32550444 (021)-32550445

Mobile

+92-300-8235799, +92-3188235799

Website: www.irengineers.com

CONTACT BY EMAIL

For Quotations Inquiry:

quotes@irengineers.com

For Work Shop Services

service@irengineers.com

-

For Accounts Department:

accounts@irengineers.com

For Retail Inquiry:

retail@irengineers.com



International
Organization for
Standardization



"Our Engineering – Your Solution"